

VISION DISPLAY COMPONENTS



Vision Display Components

Proudly designed, manufactured and assembled in Australia.

Our professional team of craftsmen have developed a display system that is versatile and subtle in design with exceptional quality and strength.

Made from solid brass with a unique stainless steel finish, the Vision range of products are both durable and sophisticated. The Vision display system is an outstanding example of Australian engineering today.

The system integrates the suspension of visual panels and shelving on either floor to ceiling stainless steel cable or rod or simply mounted to the wall. Our range of components will provide you with infinite alternatives to create your own customised display.

The minimalist design will enhance any information or product display with insignificant loss of light. Whilst the flexibility of the system provides a simple install solution as well as easy access for future modifications.



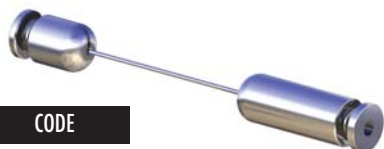
Our range of components will provide you with infinite alternatives to create your own customised display.



Fittings come in a range of different sizes and projections, for further information on the Vision display system, please visit our website www.nover.com.au or contact one of our representatives at your nearest Nover branch.

CABLE PRODUCTS [SS FINISH 1.5mm] – Cable Kit Section

Cable Kit – Floor to Ceiling
– Inc 4mts of cable



CODE

510001

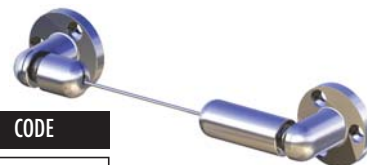
Cable Kit – Flexi
– Inc 4mts of cable
[in conjunction with track]



CODE

510002

Cable Kit – Wall to Wall
– Inc 2mts of cable



CODE

510004

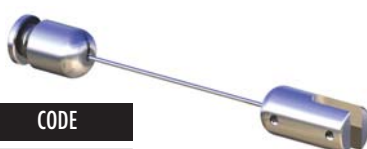
Hanging Kit – up to 3mm panel
– Inc 1mt of cable



CODE

510008

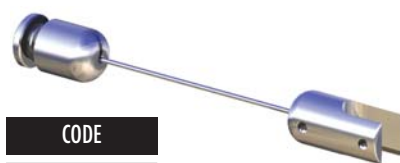
Hanging Kit – up to 6mm panel
– Inc 1mt of cable



CODE

510009

Hanging Kit – up to 10mm panel
– Inc 1mt of cable



CODE

510010

CABLE – PANEL SUPPORTS

Single Support 12mm dia
– up to 3mm panel



CODE

510011

Twin Support 12mm dia
– up to 3mm panel



CODE

510012

Single Support 12mm dia
– up to 6mm panel



CODE

510013

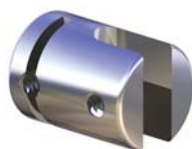
Twin Support 12mm dia
– up to 6mm panel



CODE

510014

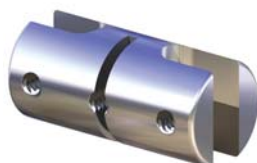
Single Support 17mm dia
– up to 6mm panel



CODE

510015

Twin Support 17mm dia
– up to 6mm panel



CODE

510016

Single Support 17mm dia
– up to 10mm panel



CODE

510017

Twin Support 17mm dia
– up to 10mm panel



CODE

510018

Top or Bottom Support 12mm dia
– up to 3mm panel



CODE

510019

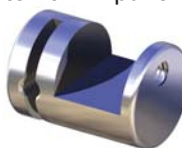
Top or Bottom Support 12mm dia
– up to 6mm panel



CODE

510020

Top or Bottom Support 17mm dia
– up to 10mm panel



CODE

510021

CABLE - SHELF SUPPORTS

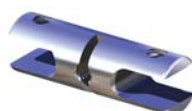
Single Shelf Support
12mm dia
– up to 6mm shelf



CODE

510022

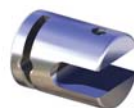
Twin Shelf Support
12mm dia
– up to 6mm shelf



CODE

510023

Single Shelf Support
17mm dia
– up to 6mm shelf



CODE

510024

Twin Shelf Support
17mm dia
– up to 6mm shelf



CODE

510025

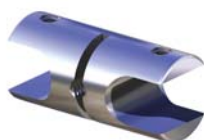
Single Shelf Support
17mm dia
– up to 10mm shelf



CODE

510028

Twin Shelf Support
17mm dia
– up to 10mm shelf



CODE

510029

Single Open Shelf Support
– 12mm dia



CODE

510032

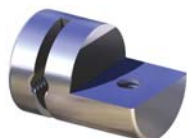
Twin Open Shelf Support
– 12mm dia



CODE

510033

Single Open Shelf Support
– 17mm dia



CODE

510034

Twin Open Shelf Support
– 17mm dia



CODE

510035



CABLE - GENERAL

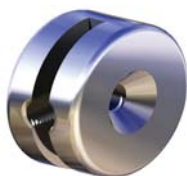
Cable Frame Support
– 12mm dia



CODE

510037

Cable Frame Support
– 17mm dia



CODE

510038

Cable Rod Support
– 12mm dia – for 6mm Rod



CODE

510039

Cable Rod Support
– 17mm dia – for 6mm Rod



CODE

510040

ROD PRODUCTS FOR 6MM ROD [SS FINISH] – Rod Kits Section

Rod Kit – Floor to Ceiling
6mm Rod needs to be added.



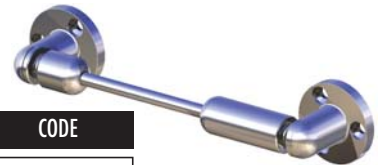
CODE
510041

Rod Kit – Flexi
[in conjunction with track]
6mm Rod needs to be added.



CODE
510042

Rod Kit – Wall to Wall
6mm Rod needs to be added.



CODE
510044

Hanging Kit – up to 3mm panel
6mm Rod needs to be added.



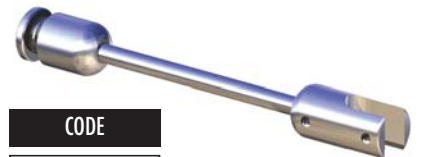
CODE
510045

Rod Hanging Kit – up to 6mm panel
6mm Rod needs to be added.



CODE
510046

Rod Hanging Kit – up to 10mm panel
6mm Rod needs to be added.



CODE
510047

ROD – PANEL SUPPORT

Single Support 12mm dia
– up to 3mm panel



CODE
510049

Twin Support 12mm dia
– up to 3mm panel



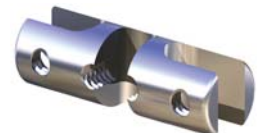
CODE
510050

Single Support 12mm dia
– up to 6mm panel



CODE
510051

Twin Support 12mm dia
– up to 6mm panel



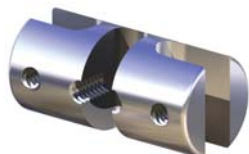
CODE
510052

Single Support 17mm dia
– up to 6mm panel



CODE
510053

Twin Support 17mm dia
– up to 6mm panel



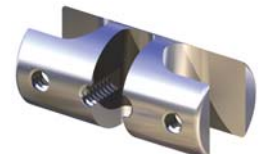
CODE
510054

Single Support 17mm dia
– up to 10mm panel



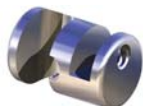
CODE
510055

Twin Support 17mm dia
– up to 10mm panel



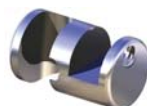
CODE
510056

Top or Bottom Support 12mm dia
– up to 3mm panel



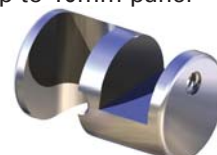
CODE
510057

Top or Bottom Support 12mm dia
– up to 6mm panel



CODE
510058

Top or Bottom Support 17mm dia
– up to 10mm panel



CODE
510059

ROD – SHELF SUPPORTS

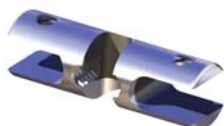
Single Shelf Support
12mm dia
– up to 6mm shelf



CODE

510060

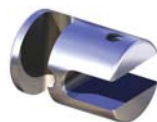
Twin Shelf Support
12mm dia
– up to 6mm shelf



CODE

510061

Single Shelf Support
17mm dia
– up to 6mm shelf*



CODE

510062

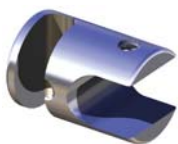
Twin Shelf Support
17mm dia
– up to 6mm shelf



CODE

510063

Single Shelf Support
17mm dia
– up to 10mm shelf



CODE

510066

Twin Shelf Support
17mm dia
– up to 10mm shelf



CODE

510067

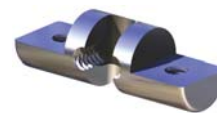
Single Open Shelf Support
– 12mm dia



CODE

510070

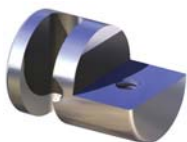
Twin Open Shelf Support
– 12mm dia



CODE

510071

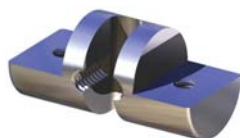
Single Open Shelf Support
– 17mm dia



CODE

510072

Twin Open Shelf Support
– 17mm dia



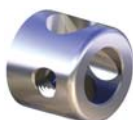
CODE

510073



ROD – GENERAL

Frame Support
– 12mm dia



CODE

510074

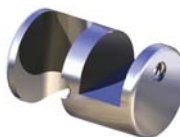
Frame Support
– 17mm dia



CODE

510075

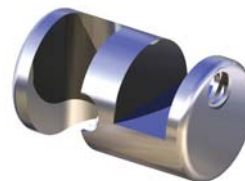
Rod Support
– 12mm dia – for 6mm Rod



CODE

510076

Rod Support
– 17mm dia – for 6mm Rod



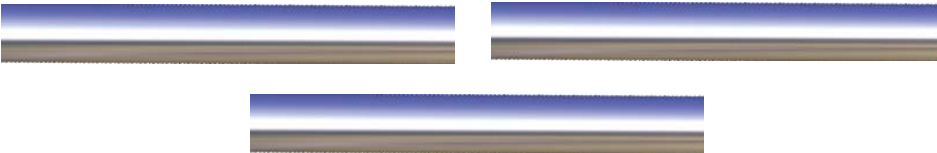
CODE

510077

ROD - GENERAL

Stainless Steel Rod – 6mm dia [1500mm length tapped both ends]

[Other sizes available are 500mm, 1000mm, 2000mm and 3000mm lengths tapped both ends]



LENGTH	CODE
1500mm	510078

WALL FITTINGS/SS FINISH - WALL MOUNTS

Wall Mount 12mm dia with 20mm projection



CODE
510079

Wall Mount – 12mm dia with 30mm projection



CODE
510080

Wall Mount – 12mm dia with 40mm projection



CODE
510081

Wall Mount – 17mm dia with 20mm projection



CODE
510082

Wall Mount – 17mm dia with 30mm projection



CODE
510083

Wall Mount – 17mm dia with 40mm projection



CODE
510084

SIDE WALL MOUNTS

Side Mount 17mm dia with 20mm projection – up to 3mm



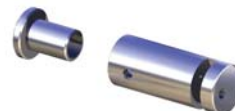
CODE
510085

Side Mount 17mm dia with 30mm projection – up to 3mm panel



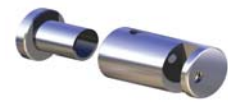
CODE
510086

Side Mount 17mm dia with 40mm projection – up to 3mm panel



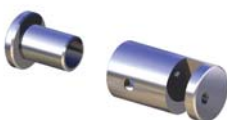
CODE
510087

Side Mount 17mm dia with 20mm projection – up to 6mm panel



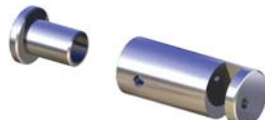
CODE
510088

Side Mount 17mm dia with 30mm projection – up to 6mm panel



CODE
510089

Side Mount 17mm dia with 40mm projection – up to 6mm panel



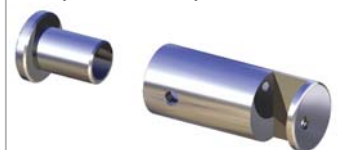
CODE
510090

Side Mount 17mm dia with 30mm projection – up to 10mm panel



CODE
510091

Side Mount 17mm dia with 40mm projection – up to 10mm panel



CODE
510092